





*Tolerates moist soil*



**Aster x arendsii 'Cattleya'**

*False Spirea* (Code: 2210)

Tall and loosely-clustered, rose pink plumes glow above dark foliage. It can tolerate some sun if kept moist. (3-4' x 2') Zn3.



**Aster x arendsii 'Hyacinth'**

*False Spirea* (Code: 2228)

Fresh glossy green foliage holds graceful plumes of lilac colored flowers from June to July. If provided with rich, moist soil, it produces wonderful cut flowers. (24" x 30") Zn3.



**Aster x arendsii 'Red Charm'**

*False Spirea* (Code: 3931)

Growing 3-4' tall, it has graceful arching plumes of true red that appear in June. It is wonderful for making a big impact in the back of the shady border. (36-48" x 24-30") Zn3. Propagation prohibited.



**Aster x japonica 'Avalanche'**

*False Spirea* (Code: 2209)

Short, airy plumes of pristine white adorn this shade garden favorite. Elegant green foliage adds contrast for the flowers. Nice for cut flower arrangements. (18" x 18") Zn3.



**Aster x japonica 'Rhineland'**

*False Spirea* (Code: 2227)

Vivid pink plumes top lustrous foliage on this easy to grow charmer! It prefers moist, shady locations. The elegant flowers are excellent for bouquets. (24" x 24") Zn3.



**Athyrium filix-femina x niponicum 'Branford Rambler'**

*Running Lady Fern* (Code: 4963)

This vigorous, spreading deciduous groundcover fern has purplish-red stems and short green fronds. Dependable and adaptable in shady locations, but never invasive. (18-24" x 24-36") Zn4.



**Brunnera macrophylla 'Variegata'**

*Siberian Bugloss* (Code: 4294)

Large heart-shaped leaves have bold white margins. Bright blue, forget-me-not flowers appear in early spring. This is a good deer-resistant alternative to Hosta! (12-18" x 18") Zn3.



**Aster x arendsii 'Fanal'**

*False Spirea* (Code: 2212)

Deep pomegranate-red flower plumes grace this show-stopper from June to July. It's easy to grow with ample moisture. (2' x 2') Zn3.



**Aster x arendsii 'Lilli Goos'**

*False Spirea* (Code: 6210)

Dark pink plumes rise atop distinctive dark green foliage. Prefers a shady site, but can tolerate some sun if kept moist. (20" x 24") Zn3.



**Aster x arendsii 'Snowdrift'**

*False Spirea* (Code: 5825)

Clean white plumes adorn graceful green, glossy foliage. This compact plant is the whitest Aster available. (14" x 12") Zn3.



**Aster x japonica 'Peach Blossom'**

*False Spirea* (Code: 2224)

Airy soft peachy-pink, 2' plumes arch gracefully over handsome green foliage in late spring. One of the first Astilbes to bloom. (24" x 18") Zn3.



**Athyrium filix-femina 'Frizelliae'**

*Tatling Fern* (Code: 7688)

This distinctive fern has deep green fronds that resemble necklaces. Delicate looking, but adaptable as any lady fern. A "Great Plant Pick" for the Pacific Northwest! (12-18" x 12-18") Zn3.



**Baumea rubiginosa**

*Golden Sword* (Code: 6995)

Fabulous foliage! Upright, leathery leaves are striped green and gold, making it an excellent vertical accent. Needs full to part sun and moisture. Excellent for containers and pond edges. (18" x 10") Zn7.



**Camassia quamash**

*Camas* (Code: 6352)

Loose clusters of star-like, deep blue blossoms are carried on 1-2 ft. spikes from late spring through early summer. Grass-like basal leaves go dormant in summer after flowering. Native to NW marshes and moist meadows. (20-24" x 12-16") Zn4.







*Tolerates moist soil*



**Canna 'Australia'**

*Canna Lily* (Code: 6938)

Brilliant orange-red flowers appear in summer above large, smooth, satiny burgundy-red foliage. This Canna is wonderful for creating a flamboyant, tropical look by the sunny edge of a pond. It is also excellent as a container centerpiece! (3-5' x 2') Zn7.



**Canna 'Intrigue'**

*Canna Lily* (Code: 6234)

Narrow, pointed, purple-gray foliage makes a stunning accent plant. 7' tall clumps produce small bright orange-red flowers in late summer. It provides that tropical touch wherever sun and moisture is plentiful. (5-7' x 3-4') Zn7.



**Carex buchananii 'Viridis'**

*Leather Leaf Sedge* (Code: 5655)

This graceful, finely-textured, evergreen grass forms an upright clump of curly-topped light green leaves. It makes a striking accent for the perennial border or container. (18-24" x 18") Zn7.



**Carex comans 'Milk Chocolate'**

*New Zealand Hairy Sedge* (Code: 4236)

Delicious milk chocolate-colored, evergreen grass with long thin blades that curve gracefully outward. Similar to C. 'Frosted Curls' but with a rich brownish-red hue. (12" x 12-24") Zn7.



**Carex elata 'Bowie's Golden'**

*Golden Sedge* (Code: 6285)

This incandescent, golden grass makes a gorgeous foliage accent for the mixed border or pond perimeter. A "Great Plant Pick" for the Pacific Northwest! (24-36" x 24-36") Zn5.



**Carex flagellifera**

*Weeping Brown Sedge* (Code: 2281)

This graceful and finely-textured grass has arching mounds of orange-bronze foliage. It makes a nice contrast with silver foliage and brightly colored flowers. (18" x 24") Zn7.



**Carex morrowii 'Aureovariegata'**

*Variegated Sedge* (Code: 2329)

This easy-to-grow evergreen grass forms a mounding clump of butter-yellow-striped leaves with green edges. A truly beautiful sedge, useful as an accent, in groups as a groundcover, or as a container subject. (12" x 15") Zn5.



**Canna 'Bengal Tiger' (syn. 'Pretoria')**

*Canna Lily* (Code: 6393)

Flamboyant yellow and green-striped foliage is topped by brilliant orange flowers, midsummer until frost. Plant in groups by the sunny edge of a pond for a bold, tropical effect! (6" x 12-24") Zn7.



**Carex buchananii**

*Leather Leaf Sedge* (Code: 2328)

Copper-bronze leaves with curly tops make a dramatic accent in the mixed border or container. The graceful, upright form looks best contrasted with silver foliage or with brightly colored flowers. (24" x 18") Zn7.



**Carex comans 'Frosted Curls'**

*New Zealand Hairy Sedge* (Code: 2511)

Very graceful, finely-textured, pale silver-green leaves form a low arching mound of foliage. It makes a beautiful, soft-textured evergreen groundcover when planted in groups. (12" x 16") Zn7.



**Carex dolichostachya 'Kaga nishiki'**

*Gold Fountain Sedge* (Code: 4805)

Fine green leaves have a gold stripe along each edge. Low and fountain-like, this sedge works well in drifts, as a formal border or specimen. Tolerant of many conditions and exposures. (12" x 24") Zn5.



**Carex flacca**

*Blue Sedge* (Code: 3734)

Evergreen chalky-blue blades spread to form a groundcover that will tolerate shade. Blue flowers on blue stems appear in early summer. (15" x 15") Zn4.



**Carex flagellifera 'Kiwi'**

*Sedge* (Code: 4941)

A soft fountain-like evergreen with finely-textured pale green blades and yellow highlights. Perfect for containers and borders. Golden highlights appear in fall. (18" x 18") Zn7.



**Carex morrowii 'Ice Dance'**

*Variegated Sedge* (Code: 6653)

Dark green leaves with white edges form arching mounds of evergreen foliage. It will spread to form a groundcover that's easy to control. A "Great Plant Pick" for the Pacific Northwest! (12" x 18") Zn5.







## Tolerates moist soil



**Carex morrowii 'Silver Sceptre'**

*Sedge* (Code: 4752)

Green leaves with silver-white edges form dense, creeping tufts. Pale and wispy flowers appear in late spring. An excellent evergreen groundcover among Hostas, ferns or bamboo. (18" x 42") Zn6.



**Carex muskingumensis 'Oehme'**

*Palm Leaf Sedge* (Code: 4166)

Abundant narrow green leaves in spring resemble a miniature palm tree. The narrow leaves have vivid yellow margins by summer. (24" x 24") Zn4.



**Carex oshimensis 'Evergold'**

*Sedge* (Code: 3890)

This popular clump-forming sedge has light yellow blades with green edges. The evergreen foliage is a standout in the garden any time of year. (10-12" x 12") Zn5.



**Carex testacea**

*Copper Hair Sedge* (Code: 5540)

Unusual, finely-textured bronzy blades turn nearly orange in sun and almost olive-green in shade. It forms a rounded mound of arching foliage that is excellent for rock gardens, massing, or container plantings. (16" x 12") Zn6.



**Chasmanthium latifolium**

*Woodland Sea Oats* (Code: 2374)

Clusters of flattened, nodding spikelets top arching stems. The attractive seedheads persist through winter. In the Pacific Northwest, it needs a sunny site that stays moist in summer. Despite the name, it is not a dune grass. (3' x 2-3') Zn5.



**Colocasia 'Jet Black Wonder'**

*Elephant Ear, Black Taro* (Code: 5546)

Exotic, enormous heart-shaped leaves are dusky purplish-black. The perfect plant to create a tropical theme in water gardens. It also makes a stunning container just by itself. (3-5' x 3') Zn9.



**Cornus sanguinea 'Midwinter Fire'**

*Bloodtwig Dogwood, Redtwig Dogwood* (Code: 6972)

Unbelievable color for the winter landscape with stems in flickering shades of yellow, orange and red. It makes an impressive mass planting. Useful in cut and dried flower arrangements. (5-10' x 5') Zn4.



**Carex muskingumensis 'Ice Fountains'**

*Palm Leaf Sedge* (Code: 6190)

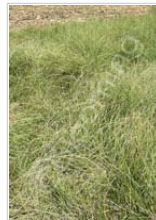
Slender blades have distinct white interiors. The white variegation gradually turns to pale green by midsummer. It spreads slowly to form a small colony in moist soils. (28" x 18") Zn3.



**Carex nigra 'Variegata'**

*Variegated Sedge* (Code: 6297)

Light green blades to 12" are softly edged in yellow. This vigorous groundcover is good for partial shade. It will also tolerate drier soils. (12" x 18") Zn5.



**Carex subfusca**

*Rusty Sedge* (Code: 7419)

This native western US sedge is found everywhere from the sea to the desert. Low growing with narrow, upright, dark green leaves, it spreads to form a low maintenance lawn or groundcover. Easy to grow in almost any situation. (4-10" x 18-36") Zn5.



**Carex tumulicola**

*Berkeley Sedge* (Code: 6823)

Very narrow bright green blades form evergreen clumps. Use as a groundcover under trees or in moist areas. It reseeds readily. Native to the Pacific Northwest. (12" x 18") Zn7.



**Chasmanthium latifolium 'River Mist'**

*Woodland Sea Oats* (Code: 6648)

The striking green and white variegated foliage makes this a great specimen plant. Late summer and early fall brings dangling oat-like spikelets that provide interest well into the winter as they dry out. (30-36" x 24-30") Zn5. PPAF Propagation Prohibited



**Cornus alba 'Elegantissima'**

*Tatarian Dogwood, Redtwig Dogwood* (Code: 6474)

Reddish-purple winter stems and white-margined green leaves make this plant perfect for year-round interest in the garden. A "Great Plant Pick" for the Pacific Northwest! (6-9' x 4-6') Zn4.



**Cornus sericea 'Cardinal'**

*Redtwig Dogwood* (Code: 4906)

The vibrant stem color changes from coral in fall to a deep cherry-red in winter. It is truly an outstanding and choice cultivar for the winter landscape. (8-10' x 6') Zn4.





*Tolerates moist soil*



**Cornus sericea 'Hedgerow's Gold'**

*Redosier Dogwood* (Code: 6858)

Bright golden-yellow and green-variegated leaves contrast vividly against deep red stems. Eye-catching every season of the year. This Northwest native cultivar is a "Great Plant Pick" for the Pacific Northwest! (4-10' x 5') Zn4.



**Disporopsis pernyi 'Bill Baker Form'**

*Evergreen Solomon's Seal* (Code: 7104)

A collector's plant for the woodland shade garden, it has fragrant white flowers that dangle from arching stems below glossy green leaves. Blue-black berries appear later in the season. (12-18" x 12") Zn6.



**Doronicum orientale 'Little Leo'**

*Leopard's Bane* (Code: 2596)

Sweet golden, semi-double daisies with yellow centers grace this compact perennial. It prefers moist soil and may go dormant in a hot summer. (12-15" x 12-18") Zn4.



**Eupatorium dubium 'Baby Joe'**

*Joe-pye* (Code: 7651)

This dwarf form of Joe-pye stays just 30" tall! Cabernet-colored flowers appear in late summer and are a magnet for butterflies. Prefer moist soils. (24-30" x 18-24") Zn4.



**Eupatorium dubium 'Little Joe'**

*Dwarf Joe Pye Weed* (Code: 6928)

This compact form has beautiful mauve-purple flowers in late summer accented by large green leaves. Butterflies love E. 'Little Joe'. It prefers moist locations. (4' x 2-3') Zn3. PP16122 Propagation Prohibited.



**Eupatorium maculatum 'Atropurpureum'**

*Joe Pye Weed* (Code: 2652)

Large clusters of tiny, rosy-purple flowers appear on towering stems in late summer. This butterfly favorite tolerates moist sites. (4-7' x 3') Zn5.



**Eupatorium purpureum subsp. maculatum 'Gateway'**

*Joe Pye Weed* (Code: 4056)

Sturdy, upright black stems carry terminal heads of rich pink flowers late summer through fall. This tall, moisture loving perennial is best used as an architectural plant with color highlights in fall. A "Great Plant Pick" for the Pacific Northwest! (5-6' x 3') Zn4.



**Eupatorium rugosum 'Chocolate'**

*White Snakeroot* (Code: 6167)

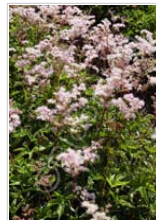
Cocoa-brown leaves are topped by clusters of white flowers late July to September. A unique and exciting addition to the back of the border. A "Great Plant Pick" for the Pacific Northwest! (2-4' x 3') Zn4.



**Filipendula palmata 'Kokome'**

*Meadowsweet* (Code: 4835)

This dwarf form has fluffy pink, lightly fragrant flowers that top small maple-like leaves in summer. This is a moisture lover. (6-8" x 12") Zn4.



**Filipendula palmata 'Nana'**

*Meadowsweet* (Code: 5509)

Dwarf plant with deep pink, feathery flower panicles in July and August. A charming addition for front of the border where the soil stays moist. (10" x 12") Zn3.



**Filipendula purpurea 'Alba'**

*Meadowsweet* (Code: 3449)

The astilbe-like panicles are composed of many tiny white flowers with pink stamens. The feathery flowers appear in summer above dark green leaves on a plant with a strong upright habit. (3' x 2') Zn5.



**Filipendula purpurea 'Elegans'**

*Meadowsweet* (Code: 2660)

Tiny red-purple flowers with red stamens are produced in large foamy masses in summer. It needs moist soil if planted in sun. (3' x 2') Zn5.



**Filipendula rubra 'Venusta'**

*Queen of the Prairie* (Code: 2661)

Masses of peachy-pink, fragrant flowers cover this statuesque giant. It needs plenty of moisture to be at its best. A stunning selection for the back of the mixed border or pond edge. (5-6' x 4') Zn3.



**Filipendula vulgaris 'Flore Pleno'**

*Meadowsweet* (Code: 5118)

Showy creamy-white, double blossoms shine atop lush green, ferny foliage. It begins blooming in June and flowers over a long period. Best performance occurs with constant moisture. (24" x 18") Zn3.







*Tolerates moist soil*



**Hibiscus 'Kopper King'**

*Mallow* (Code: 4700)

Stunning dark purple foliage is topped by large pale pink flowers with dark red eyes and dramatic red veining. It performs best when planted in moist soil. The foliage emerges very late in spring. (4' x 3-4') Zn4. PP10793 Propagation Prohibited.



**Hydrangea macrophylla 'Blue Wave'**

*Bigleaf Hydrangea* (Code: 4168)

One of the most vigorous lace-cap Hydrangeas, the showy giant blue flowers bloom from mid-to-late summer on old wood. Flowers are pink in alkaline soils. (4-6' x 4-6') Zn6.



**Hydrangea macrophylla 'Frillibet'**

*Bigleaf Hydrangea* (Code: 4916)

Huge, multi-colored mophead flowers are composed of frilly, tightly-packed blue, pink and cream florets. The flower color changes with soil acidity. It's excellent for cut flowers too! (3-5' x 3-4') Zn6.



**Hydrangea macrophylla var. serrata 'Preziosa'**

*Sawtooth Hydrangea* (Code: 3357)

Numerous pink-blushed, snowball flowers age to shades of lilac and crimson. As the flowers deepen in color, so does the foliage! It prefers cool, moist soils. A "Great Plant Pick" for the Pacific Northwest! (4-5' x 5') Zn6.



**Imperata cylindrica 'Red Baron'**

*Blood Grass* (Code: 2913)

The brilliant red leaf blades are even more iridescent when back-lit by the autumn sun; especially when planted en masse. This short grass prefers moist areas. (WA and OR only) (18" x 12") Zn6.



**Iris ensata 'Cry of Rejoice'**

*Japanese Iris* (Code: 5130)

Broad deep violet flowers have pale white veining and yellow flares which dance on tall stems above a substantial foliage clump. Prefers rich, moist soil, and perfect for around ponds. (32" x 20") Zn4.



**Iris ensata 'Fortune'**

*Japanese Iris* (Code: 4826)

Elegant and stately white and purple blooms sparkle in the mixed border. It needs plenty of water to be at its best. (30" x 12") Zn4.



**Hibiscus 'Lunaâ,ç White'**

*Rose Mallo* (Code: 3809)

'6-7" white flowers with a large red eye, grace this bushy, well branched, compact plant. It performs best when planted in moist soil. The foliage emerges very late in spring. (24-36" x 24") Zn5. PPAF Propagation Prohibited.



**Hydrangea macrophylla 'Fasan' ('Teller Red')**

*Bigleaf Hydrangea* (Code: 7344)

Stunning red lace-cap flowers have large, sterile florets in double rows. It is one of the Teller Series, from Switzerland. (3-5' x 3-4') Zn6.



**Hydrangea macrophylla 'Taube' ('Teller Pink')**

*Bigleaf Hydrangea* (Code: 6135)

Large, deep pink or violet-blue lace-cap blooms age to rich jewel tones on this long-blooming favorite. It requires neutral to alkaline soil to obtain pink color. Flowers are blue in acid soil. (3-5' x 3-5') Zn6.



**Hydrangea quercifolia 'Snow Queen'**

*Oakleaf Hydrangea* (Code: 4769)

Bold, cone-shaped panicles of large sterile, white florets gradually deepen to russet-pink. This deciduous shrub has deep red-bronze fall color and cinnamon-hued winter stems. A "Great Plant Pick" for the Pacific Northwest. (7-10' x 7") Zn5.



**Iris ensata**

*Japanese Iris* (Code: 6813)

Graceful, upright, sword-shaped leaves with distinct raised mid-rib. Large flowers on 4' stems range in colors of purple, violet, pink, rose, red or white often edged in a contrasting shade. (2-4' x 2') Zn4.



**Iris ensata 'Dace'**

*Japanese Iris* (Code: 5181)

Gorgeous, soft blue flowers have contrasting yellow flares that fade beautifully to creamy-white. Very large blooms, to 5" across! Prefers rich, moist soil. (32-38" x 24") Zn4.



**Iris ensata 'Henry's White'**

*Japanese Iris* (Code: 6275)

This Iris features elegant pure white flowers of unmatched beauty. Perfect for borders, around ponds, or for cut flowers. (36" x 24") Zn4.





*Tolerates moist soil*



**Iris ensata 'Jedo Jima'**

*Japanese Iris* (Code: 6034)

Stunning, large rosy-violet flowers with cream-hued veins are on tall stems. It prefers moist soils such as the edge of a pond. (24-36" x 12-24") Zn4.



**Iris ensata 'Variegata'**

*Japanese Iris* (Code: 2936)

Eye-catching, slender green leaves are variegated with wide ivory margins that intensify as the season progresses. A stunning foil to the violet-blue flowers. It needs plenty of moisture. (24-36" x 12-24") Zn4.



**Iris sibirica 'Bennerup Blue'**

*Siberian Iris* (Code: 6846)

Deep, rich cobalt and pale blue blooms shimmer in the garden. It performs best in a cool site with slightly moist, acidic soil. Long-lived and easy to grow. (30" x 24") Zn3.



**Iris sibirica 'Caesar's Brother'**

*Siberian Iris* (Code: 2968)

Deep velvety purple flowers top deep green, reed-like foliage. This is the most popular Siberian Iris. (24-30" x 18") Zn3.



**Iris sibirica 'Lady Vanessa'**

*Siberian Iris* (Code: 6038)

Graceful bicolor blooms feature pale wine-red standards and true wine-red falls. Blooms are elegant and attractive. Performs best in cool site with slightly moist acidic soil. (36" x 24") Zn3.



**Juncus 'Occidental Blue'**

*Bog Rush* (Code: 5541)

Clumps of stiffly-upright, blue-gray needles radiate from its base. Creates a marvelous textural accent, adding cool hues and bold form to any garden. It prefers moist to wet locations. (12" x 12") Zn5.



**Juncus effusus 'Unicorn'**

*Giant Corkscrew Rush* (Code: 4680)

Blades are extra long and thick with curled and twisted, deep green leaves that add interest to any garden. Great for floral arrangements too! It's like Juncus 'Spiralis' on steroids! (24" x 30") Zn4.



**Iris ensata 'Lion King'**

*Japanese Iris* (Code: 7434)

Breathtaking, double purple flowers with frilled edges and a white central markings on each fall, plus some yellow on the signals. Long, sword-like leaves have prominent midribs, lending a tall and stately form. (30-36" x 24") Zn4.



**Iris laevigata 'Variegata'**

*Japanese Water Iris* (Code: 5184)

Striking creamy-white-striped leaves hold their color all year. Light blue flowers bloom in late spring. It needs moist soil and will even grow in standing water! (30" x 18") Zn4.



**Iris sibirica 'Butter and Sugar'**

*Siberian Iris* (Code: 6096)

Flowers have sparkling white standards with sunny-yellow falls. Long-lived and pest resistant. (28" x 24") Zn3.



**Iris sibirica 'Cleve Dodge'**

*Siberian Iris* (Code: 6847)

Striking deep violet-purple flowers top rich green foliage. It blooms late spring to early summer. (30" x 24") Zn3.



**Iris sibirica 'Liberty Hills'**

*Siberian Iris* (Code: 6098)

Attractive blue-violet flowers with darker centers top rich green foliage. Blooms late spring to early summer. Performs best in a cool site with slightly moist acidic soil. (32" x 24") Zn3.



**Juncus effusus 'Gold Strike'**

*Common Rush* (Code: 5198)

Good selection for gardens with wet, boggy areas or standing water. Distinctive gold stripe runs full length of each blade giving the plant a strong vertical emphasis. (2-3' x 2') Zn5.



**Juncus inflexus 'Afro'**

*Blue Medusa Rush* (Code: 5199)

Powdery-blue spiraling stems twist and contort to 18". Great in containers, as a shallow pond specimen or in a moist garden. Very vigorous and easy to grow. (18" x 24") Zn6.







*Tolerates moist soil*



**Juncus inflexus 'Blue Arrows'**

*Common Rush* (Code: 4984)

The gray-blue foliage grows in stiff, upright clumps. This moisture loving rush is heat and drought tolerant too! Perfect for containers or as accent in the garden. (24-36" x 18-24") Zn5.



**Ligularia 'Last Dance'**

*Golden Ray* (Code: 6650)

This compact Ligularia has very large dark green leaves that create a bold contrast in the shade garden. Bright yellow, daisy-like flowers appear in the fall. The foliage makes a bold contrast with ferns. (18" x 24") Zn5. PP20947 Propagation Prohibited



**Ligularia dentata 'Osiris Fantaisie'**

*Golden Ray* (Code: 7638)

The thick, dark-green leaves have serrated edges which curl over to reveal glossy, burgundy undersides. Deep purple-red stems rise in late summer holding clusters of golden-yellow daisy-like flowers. Plants have a good, full habit and make an attractive focal point. (12-20" x 18-24") Zn4. PP19302



**Ligularia stenocephala 'Little Rocket'**

*Golden Ray* (Code: 3891)

Bright yellow flower spikes just 20" tall bloom from mid-to-late summer. Grayish-green, heart-shaped foliage on long stems. Performs best in moist soil and afternoon shade. (18-22" x 12-24") Zn4. PP14621 Propagation Prohibited.



**Ligularia x hessei 'Gregynog Gold'**

*Golden Ray* (Code: 5138)

Layers of handsome green, heart-shaped foliage is crowned by orange-yellow, daisy-like flowers on tall conical spikes. This wonderful specimen plant is perfect near water. (6' x 3') Zn4.



**Lobelia 'Monet Moment'**

*Cardinal Flower* (Code: 6633)

Bright, rose-pink flowers make a dramatic contrast against dark green foliage. Hummingbirds love the blooms which appear from August into October. (30-36" x 18-24") Zn6. PPAF Propagation Prohibited



**Lobelia fulgens 'Queen Victoria'**

*Lobelia* (Code: 3055)

Dark bronze-red foliage is topped by luminous scarlet flowers in summer. This stunning color combination makes it very popular. Like most Lobelia, it requires moist soil. (2' x 1') Zn6.



**Ligularia 'Britt-Marie Crawford'**

*Bigleaf Ligularia* (Code: 3646)

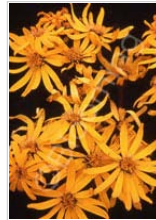
A remarkable yellow-orange, daisy-like flower with large shiny chocolate-maroon foliage. Leaves are round to triangular in shape with wavy margins. (24" x 36") Zn4. PP16113, EU12794 Propagation Prohibited.



**Ligularia dentata 'Desdemona'**

*Golden Ray* (Code: 3020)

Outstanding deep purple foliage gives a dramatic tropical air to the border. Clusters of golden-yellow daisies appear late summer. Requires ample water. (3' x 3') Zn3.



**Ligularia dentata 'Othello'**

*Golden Ray* (Code: 5251)

Large and rounded, deep purple foliage makes a bold garden accent. Golden yellow daisies top sturdy stalks in late summer. (30-42" x 36-48") Zn4.



**Ligularia stenocephala 'The Rocket'**

*Golden Ray* (Code: 3017)

A stately plant for moist sites. Sturdy spikes of crowded 3 ray, golden-yellow flowers on purple stems rise above green, very large and almost triangular foliage. Exotic! (4' x 3') Zn5.



**Lindernia grandiflora**

*Blue Moneywort* (Code: 4259)

Sparkling violet-blue flowers with white star-like centers top a spreading mat of tiny dark green, heart-shaped leaves. (2-3" x 24") Zn7.



**Lobelia cardinalis 'Golden Torch'**

*Cardinal Flower, Lobelia* (Code: 6632)

Scarlet flowers bloom from July to September above bright gold foliage. Foliage is most dramatic in spring and early summer. (18-24" x 18") Zn3. PP19844 Propagation Prohibited.



**Lobelia laxiflora**

*Cardinal Flower* (Code: 3057)

Yellow and red "firecracker" flowers grace this exotic-looking, shrubby perennial late summer through fall. It will re-sprout from the roots if frozen. (18-30" x 18-36") Zn7.







*Tolerates moist soil*



**Lobelia siphilitica**

*Blue Lobelia* (Code: 3059)

Dramatic spikes of large deep blue flowers make this a mixed border knockout! Provide rich soil and ample moisture for best performance. The flowers are great for bouquets! (24" x 18") Zn5.



**Lobelia x speciosa 'Compliment Deep Red'**

*Cardinal Flower* (Code: 5420)

Beautiful bright red blooms highlight this upright perennial. An excellent plant for the mid-summer border, it prefers moist soils. (24" x 18") Zn3.



**Lobelia x gerardii**

*Purple Lobelia* (Code: 3056)

Long spikes of deep purple-violet blooms top dark green foliage for many weeks in summer and are excellent for bouquets. (24" x 18") Zn5.



**Lonicera involucrata**

*Black Twinberry* (Code: 7268)

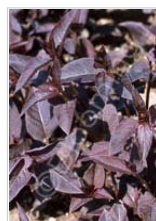
Pairs of small, yellow, pendulous, tubular flowers are surrounded by green bracts in late spring and summer. After the flowers fade, pairs of showy black berries form, each surrounded by the bracts that have now turned bright red. The flowers of this handsome shrub are enjoyed by hummingbirds, while other birds and wildlife will eat the berries. A Pacific Northwest native. (8-10' x 6-8') Zn4.



**Lysimachia atropurpurea 'Beaujolais'**

*Purple Loosestrife* (Code: 4481)

Heavy blooming selection with gooseneck-like spikes of deep burgundy buds opening to deep burgundy-pink flowers. Long blooming and superb as a cut flower! (18" x 18") Zn6.



**Lysimachia ciliata 'Purpurea'**

*Fringed Loosestrife* (Code: 3087)

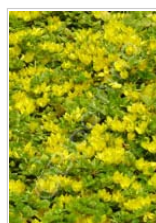
Deep burgundy-purple leaves provide striking foliage color in winter and spring. Delicate yellow flowers are borne in airy clusters on stalks in summer. It will spread vigorously with ample moisture. (24" x 36") Zn5.



**Lysimachia clethroides**

*Gooseneck Loosestrife* (Code: 3090)

Gracefully-arching spikes of white flowers appear in summer and are adored by butterflies. This cottage garden favorite is wonderful for cut flowers. It will spread to form a colony. (24-36" x 24-36") Zn4.



**Lysimachia nummularia**

*Creeping Jenny* (Code: 3085)

Ruffled, round green leaves and bright yellow flowers adorn this trailing plant. Great for hanging baskets, containers or groundcover. It prefers moist soil. (4" x 24") Zn4.



**Lysimachia nummularia 'Aurea'**

*Creeping Jenny* (Code: 3084)

Brilliant golden leaves and bright yellow flowers adorn this trailing plant. Great for hanging baskets, containers or as a groundcover. It prefers moist soil. (4" x 24") Zn4.



**Lysimachia punctata 'Golden Alexander'**

*Yellow Loosestrife* (Code: 4667)

Brilliant golden-variegated foliage grows into a sturdy, upright dump. Sports buttery-yellow flowers in summer. Perfect for brightening moist, shady areas! (18-24" x 18-24") Zn4. PP13547 Propagation Prohibited.



**Mimulus cardinalis**

*Scarlet Monkey Flower* (Code: 3115)

Scarlet-orange, snapdragon-like flowers have yellow throats. This Pacific Northwest native is loved by hummingbirds and blooms all summer. Performs best in part shade with moist soil. (14" x 24") Zn6.



**Miscanthus 'Huron Sunrise'**

*Japanese Silver Grass, Eulalia* (Code: 7263)

One of the best Miscanthus for northern climates, it flowers profusely in August so you can enjoy the graceful blooms long before frost. The burgundy flower plumes are held well above the foliage with no flopping. (5-6' x 3-4') Zn4. PPAF Propagation prohibited.



**Miscanthus oligostachyus 'Purpurascens'**

*Flame Grass, Eulalia* (Code: 3117)

One of the best grasses for fall color! Silvery inflorescences appear above broad, reddish-purple leaves in autumn. The winter foliage is a rich bronze-brown. (3' x 2') Zn4.



**Miscanthus sinensis 'Adagio'**

*Dwarf Japanese Silver Grass* (Code: 6601)

This truly superior dwarf selection is topped by pink flowers that fade to white. Finely-textured, silver-gray blades lend an elegant touch to the landscape. A "Great Plant Pick" for the Pacific Northwest! (3' x 3') Zn6.





*Tolerates moist soil*



**Miscanthus sinensis 'Cosmopolitan'**

*Japanese Silver Grass* (Code: 6829)

Vivid variegation! The leaf blades have wide, dazzling white edges. Coppery plumes appear in fall. This outstanding border accent is a "Great Plant Pick" for the Pacific Northwest! (6-8' x 4-5') Zn6.



**Miscanthus sinensis 'Gold & Silver'**

*Maiden Grass* (Code: 5548)

Slender, arching foliage produces golden flowers that turn silver with age. Creates a striking effect in fall. (5-6' x 3') Zn5.



**Miscanthus sinensis 'Gracillimus'**

*Japanese Silver Grass* (Code: 5776)

This finely-textured, narrow-leaved grass forms erect clumps. Leaves turn orange in fall. Copper-colored flowers appear in late September, maturing to silver through winter. A "Great Plant Pick" for the Pacific Northwest! (6' x 3') Zn4.



**Miscanthus sinensis 'Grosse Fontaine'**

*Japanese Silver Grass* (Code: 6598)

Showy bronze plumes top large fountain-like foliage. Excellent fall color. Great as a specimen plant. (6-7' x 5') Zn5.



**Miscanthus sinensis 'Morning Light'**

*Japanese Silver Grass* (Code: 3121)

Of great refinement and elegance, this grass has thin leaves with silver-variegated edges that shimmer when backlit. Inflorescences have a pink tinge at first, turning deep reddish-bronze later in fall. A "Great Plant Pick" for the Pacific Northwest! (4-5' x 3') Zn4.



**Miscanthus sinensis 'Puenktchen'**

*Japanese Silver Grass* (Code: 6691)

Coppery-pink seedheads top stiffly-upright blades banded with gold. Adds an exotic look to the landscape. (5-7' x 3') Zn5.



**Miscanthus sinensis 'Silberfeder'**

*Japanese Silver Grass* (Code: 3120)

Large, showy white flower plumes tower above fountain-like foliage. Blooming fall through winter, it makes an excellent landscape accent. A "Great Plant Pick" for the Pacific Northwest! (6-9' x 3') Zn5.



**Miscanthus sinensis 'Gilt'**

*Japanese Silver Grass* (Code: 5440)

Bright green new growth matures to gold and green with white-striped midrib. Excellent as a privacy screen. (7' x 3-4') Zn7.



**Miscanthus sinensis 'Gold Bar'**

*Japanese Silver Grass* (Code: 3277)

The leaf blades have dramatic horizontal gold banding that really glows in the sun. This dwarf form is perfect for smaller gardens or containers. A "Great Plant Pick" for the Pacific Northwest! (3-4' x 20") Zn5. PP15193 Propagation Prohibited.



**Miscanthus sinensis 'Graziella'**

*Japanese Silver Grass* (Code: 4538)

Finely-textured blades with slender silvery midribs, create an overall stately upright habit. Flower plumes appear in August, at first emerging silky rose-pink, then aging to a nice silvery-white. Good orange fall color. (5-6' x 3') Zn5.



**Miscanthus sinensis 'Malepartus'**

*Japanese Silver Grass* (Code: 5885)

Strong-growing grass with large pink-purple flower plumes in August that fade to silvery-taupe by fall. The plumes are highlighted with gorgeous fall color in rainbow shades. (6-7' x 4') Zn5.



**Miscanthus sinensis 'Positano'**

*Japanese Silver Grass* (Code: 6815)

Striking reddish plumes top this tall, graceful grass. Use as an eye-catching garden accent or specimen. Wonderful fall color. (6-7' x 5') Zn5.



**Miscanthus sinensis 'Rigoletto'**

*Japanese Silver Grass* (Code: 4510)

Beautiful dwarf, variegated grass with a fine texture. Similar in appearance to Miscanthus 'Variegatus', but grows only 3 feet tall and therefore stays upright. (3' x 3') Zn6.



**Miscanthus sinensis 'Strictus'**

*Japanese Silver Grass* (Code: 5848)

Stiffly-upright green blades, with strong horizontal bands of yellow, are very showy. Coppery flower spikes rise several feet above the foliage in fall. A great addition to any garden! (6-8' x 3-4') Zn4.







*Tolerates moist soil*



**Miscanthus sinensis 'Zebrinus'**

*Japanese Silver Grass* (Code: 5542)

Large, arching, green leaves have horizontal bands of yellow and cream variegation. Coppery flower spikes rise several feet above the foliage in fall. It imparts a graceful and informal look to the landscape. (4-6' x 3') Zn5.



**Molinia caerulea 'Moorflamme'**

*Purple Moor Grass* (Code: 6994)

Airy clouds of dark flowerheads on fine 2' stems dance above a compact foliage dump. Very attractive rich purple fall colors. A "Great Plant Pick" for the Pacific Northwest! (2' x 2') Zn5.



**Molinia caerulea 'Variegata'**

*Purple Moor Grass* (Code: 6110)

Dark green and cream leaves give off a golden glow, accented by ochre flower plumes in late summer. A compact grass and excellent for containers. A "Great Plant Pick" for the Pacific Northwest! (24" x 12") Zn5.



**Myosotis sylvatica 'Alba'**

*Forget-Me-Not* (Code: 3133)

Clouds of white Forget-Me-Nots shine above green foliage, making this plant an adorable companion for all those spring-flowering bulbs. Biennial. (9" x 12") Zn3.



**Petasites japonicus 'Giganteus Variegatus'**

*Japanese Coltsfoot, Butterbur* (Code: 5893)

Enormous round green leaves have irregular and extensive cream-colored variegation. In early spring before the leaves emerge, terminal blossoms appear on flower spikes with small green leaf-like bracts. It will naturalize to form a colony. (3' x 3') Zn5.



**Polygonatum odoratum 'Variegatum'**

*Variegated Solomon's Seal* (Code: 3339)

Fragrant white flowers top arching stems of silver-edged leaves in spring. This woodland favorite has a nice creeping habit that is simply stunning when it forms a colony. A "Great Plant Pick" for the Pacific Northwest. (24" x 12") Zn4.



**Primula 'Green Jade'**

*Primrose* (Code: 6634)

Firly green flowers with a yellow eye bloom from spring to early summer. A great garden performer for moist sites. (4" x 9") Zn6.



**Molinia arundinacea 'Skyracer'**

*Moor Grass* (Code: 5628)

Stiffly-upright, 5' tall, wiry stems carry delicate, airy yellow flowers above a foliage clump that remains 2-3' tall. The flowers have a translucent fountain-like effect when backlit. (4-5' x 2-3') Zn4.



**Molinia caerulea 'Strahlenquelle'**

*Purple Moor Grass* (Code: 6816)

Airy, radiating flowerheads create a graceful fountain-like effect in late summer. Buttery-yellow fall color adds to the show. It prefers moderately moist soil. (3' x 3') Zn4.



**Myosotis alpestris 'Ultramarine'**

*Forget-Me-Not* (Code: 4985)

Hundreds of dainty deep blue flowers cover this Forget-Me-Not in spring and early summer. Considered one of the best strains of Myosotis due to its compact habit. (5-6" x 8-12") Zn3.



**Myosotis sylvatica 'Rosea'**

*Forget-Me-Not* (Code: 3134)

Clouds of pink forget-me-nots shine above green foliage, making this a wonderful little companion plant for spring-flowering bulbs. Biennial. (9" x 12") Zn3.



**Polygonatum biflorum**

*Solomon's Seal* (Code: 3337)

Arching single stems feature dangling clusters of chartreuse, bell shaped blossoms in spring. Blooms become black berries in late summer. An excellent companion for ferns, Hostas, and hellebores. (24" x 8") Zn3.



**Polygonum odoratum**

*Vietnamese Coriander* (Code: 6439)

Fragrant white flowers top arching sprays of green leaves edged in silver. It's beautiful in mass plantings or in woodland gardens. Excellent for culinary use. (2' x 1') Zn8.



**Primula japonica 'Alba'**

*Japanese Primrose* (Code: 6517)

Pure white flowers are arranged in whorls up tall, graceful stalks in summer. A gorgeous selection for the shade garden. (12-18" x 12") Zn5.





*Tolerates moist soil*



**Primula japonica 'Miller's Crimson'**

*Japanese Primrose* (Code: 3366)

Bright crimson-red flowers are arranged in whorls up tall, graceful stalks in spring making it a gorgeous selection for the shade garden. A "Great Plant Pick" for the Pacific Northwest! (20" x 12") Zn5.



**Rodgersia podophylla 'Rotlaub' (Redleaf)**

*Roger's Flower* (Code: 2161)

A good, hardy selection with bold, dark foliage that keeps its color through summer. Airy white flower panicles appear early summer. (36-42" x 24-36") Zn5.



**Salix purpurea 'Nana'**

*Blue Willow* (Code: 3400)

Dainty gray-green leaves gracefully cover this petite willow. Rich purple stems are striking in winter. It makes a great border specimen or an attractive hedge. A "Great Plant Pick" for the Pacific Northwest! (5-6' x 5') Zn3.



**Sambucus nigra 'Variegata'**

*Variegated Elderberry* (Code: 6080)

Stunning deciduous shrub with brilliantly-variegated green and white leaves. Large flat clusters of white spring flowers are followed by dark purple berries. (13' x 6') Zn4.



**Sambucus racemosa 'Sutherland Gold'**

*Golden Elderberry* (Code: 6739)

Lacy white flowers dance atop finely-dissected golden foliage in summer. A striking and vigorous selection that tolerates sun nicely. (10' x 6-8") Zn5.



**Sanguisorba tenuifolia 'Pink Elephant'**

*Burnet* (Code: 4677)

Tall, thin stems are topped by long, deep pink, cylindrical flowers in summer. The leaves have a neat fern-like appearance. (4' x 2') Zn4.



**Scrophularia auriculata 'Variegata'**

*Variegated Figwort* (Code: 5004)

Tall spikes of tiny wine-red flowers dance above bold green and creamy-white variegated foliage with a crinkly texture. It needs rich, moist soil. A "Great Plant Pick" for the Pacific Northwest! (2' x 2') Zn5.



**Primula veris 'Sunset Shades'**

*Cowslip Primrose* (Code: 4057)

This fragrant primrose has blooms in sunset colors of oranges, reds and yellows, that appear on short stems. It adds a spot of bright color to the shade garden and will naturalize in moist shade. (8-10" x 10") Zn2.



**Salix integra 'Hakuro Nishiki'**

*Brocade Willow* (Code: 6159)

Brilliant green, white and pink-splashed leaves adorn this rounded shrub. A perfect accent for the small garden, it can also be trained as topiary! (6' x 6') Zn6.



**Sambucus nigra 'Madonna'**

*Elderberry* (Code: 6081)

Brilliant gold-variegated leaves are graced with pretty white flower clusters midsummer, followed by berries in fall. An excellent contrast when placed against a dark background. (12' x 6') Zn4.



**Sambucus racemosa**

*Red Elderberry* (Code: 7240)

NW native deciduous shrub with pinnately compound leaves. Clusters of tiny white flowers bloom from early spring to mid summer, followed by showy, bright red (sometimes yellow or white) berries. The fruits are inedible, but good for wildlife. (10' x 8-12') Zn4.



**Sanguisorba officinalis 'Tanna'**

*Burnet* (Code: 4738)

Superb dwarf form of this cucumber-flavored perennial. Small burgundy-red spires top foot long stems in summer over a compact, mounding plant. Great for use in smaller borders or herb garden. (18" x 10") Zn4.



**Scirpus tabernaemontani 'Zebrinus'**

*Zebra Rush* (Code: 4303)

Beautiful horizontal gold bands encircle narrow, deep green leaves. This is an excellent vertical accent for moist soil by a pond or stream. (4' x 10-2') Zn5.



**Selaginella 'Blue Tuffet'**

*Club Moss* (Code: 7033)

This low growing club moss has dainty blue-green foliage. It makes an excellent filler for containers or use in shaded areas between pavers and rocks. (2-3" x 12") Zn6.







*Tolerates moist soil*



**Selaginella 'Golden Tuffet'**

*Club Moss* (Code: 7034)

This finely-textured club moss has golden new growth that appears brightest in spring, then fades to soft chartreuse by summer. It makes an excellent filler for containers or use in shaded areas between pavers and rocks. (2-3" x 12") Zn6.



**Selaginella kraussiana 'Aurea'**

*Golden Club Moss* (Code: 4555)

This finely-textured club moss forms a nice groundcover. Golden new growth appears brightest in spring, then fades to a soft chartreuse by summer. (2-3" x 12-16") Zn6.



**Smilacina stellata**

*Star-Flowered False Solomon's Seal* (Code: 6541)

Northwest native false Solomon's seal with zigzag stems that spread to form a small colony. White star-shaped flowers appear in spring followed by greenish berries that eventually turn black. (24" x 48") Zn3.



**Solidago rugosa 'Fireworks'**

*Goldenrod* (Code: 7280)

The golden-yellow flowers arch gracefully downward like glittering trails from exploding fireworks! This late summer/early fall bloomer is a very easy plant to grow provided it has regular moisture. (30-36" x 24-30") Zn4.



**Spigelia marilandica**

*Indian Pink* (Code: 4000)

This native southeast American plant has upright, tubular red flowers with yellow throats in summer. The foliage breaks dormancy very late in the spring. Unusual and rare! (12-18" x 12") Zn5.



**Stylophorum diphyllum**

*Wood Poppy, Celandine Poppy* (Code: 5644)

Bright yellow poppy-like flowers appear in early to mid spring above deeply lobed leaves. 3-5 flowers open at each terminal inflorescence. Easily spreads by seed. Native to eastern US woods. (18-24" x 18-24") Zn4.



**Thalictrum flavum 'Illuminator'**

*Meadow Rue* (Code: 4164)

Intriguing columbine-like foliage emerges pale gold/chartreuse with bronzy-pink highlights. Airy clusters of tiny yellow, fragrant flowers on tall stems, June and July. Excellent for creating unique color combinations in the border. (5' x 2') Zn5.



**Thalictrum minus 'Adiantifolium'**

*Meadow Rue* (Code: 5054)

Foliage resembling that of a maidenhair fern is excellent for use in floral arrangements. Dainty chartreuse flowers add visual interest. A unique and beautiful selection that can naturalize nicely. (12-18" x 12") Zn5.



**Thalictrum rochebrunianum**

*Meadow Rue* (Code: 5751)

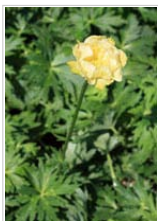
Lovely, fern-like foliage is topped by purple-mauve flowers. Doesn't require staking and is good for coastal sites. (4-5' x 2') Zn5.



**Thuja plicata**

*Western Red Cedar* (Code: 7238)

Tall, NW native conifer with tiny scale-like leaves arranged in flattened sprays. Small seed cones face upward on the branches. The wood is rot resistant. It prefers moist, well-drained soil. (50' x 20') Zn5.



**Trollius 'Alabaster'**

*Globeflower* (Code: 7690)

Unusual creamy-white, globe-shaped flowers appear in late spring. The foliage is deepest green and strongly dissected. It prefers moist soil and cool conditions. (18-20" x 18-24") Zn3.



**Typha latifolia 'Variegata'**

*Variegated Cattail* (Code: 4218)

Bold green and white-striped leaves highlight cinnamon-brown cattails. Wonderful for water gardens or perpetually-moist areas. It does not spread as aggressively as the species. (5-6' x 2') Zn4.



**Uncinia rubra**

*Red Hook Sedge* (Code: 4177)

This evergreen New Zealand sedge displays rich, bronze-colored blades. A marvelous addition to any garden. It prefers a cool, moist site in sun or partial shade. (18" x 24") Zn8.



**Viola 'Columbine'**

*Violet, Pansies* (Code: 4114)

Delicately tie-dyed violet and white miniature pansies are lightly fragrant with nice stems for cutting. A wonderful long-blooming and low maintenance selection. (4-6" x 12") Zn6.





*Tolerates moist soil*



**Viola 'Heartthrob'**

*Hardy Violet* (Code: 4145)

Heart-shaped leaves with bronze-purple markings appear in spring. Creates a nice groundcover when planted en masse. (4-8" x 12") Zn5. PP19996 Propagation Prohibited.



**Viola 'Purple Showers'**

*Violet* (Code: 4432)

Deep purple flowers bloom continuously May through July, above deep green, glossy foliage. It often blooms again in fall. (6" x 18") Zn4.



**Viola cornuta 'Bowler's Black'**

*Viola* (Code: 6458)

Deepest midnight-blue, nearly-black, velvety violets grace this heavy-blooming, compact plant. Beautiful as it is unusual. (6-9" x 12") Zn6.



**Viola labradorica**

*Labrador Violet* (Code: 3706)

Dainty violet-blue flowers grace purple foliage May to June. It spreads to form an attractive groundcover. A great foil for many plants. (12" x 12") Zn2.



**Viola odorata 'Blue Remington'**

*Sweet Violet* (Code: 5157)

Large blue violets appear in profusion from late winter through spring and sometimes in fall. The glossy green foliage is neat and trouble-free. (6" x 15") Zn5.



**Xanthosoma mafaffa 'Lime Zinger'**

*Elephant Ear* (Code: 4147)

Spectacularly huge gold-to-lime-green elephant ear foliage grows to 4' tall or more. Marvelous for creating a glowing tropical effect in containers or near water. (4-6' x 4-6') Zn10.



**Viola 'Molly Sanderson'**

*Violet* (Code: 5246)

Unique velvety black flowers with vivid yellow centers make this cultivar stand out in any garden or container. Blooms from late winter through spring. (6" x 12") Zn6.



**Viola 'Rebecca'**

*Viola* (Code: 4878)

Charming pure white violets feature slightly-ruffled, feathered purple edges spring through fall. A well-behaved addition to the mixed border or container planting. (6-10" x 8-12") Zn6.



**Viola cornuta 'Etain'**

*Violet* (Code: 3821)

Lovely light yellow flowers with lavender edges have a sweet fragrance. Compact and very free-flowering. It makes a great border and container plant. (4-6" x 6") Zn5.



**Viola obliqua 'Royal Robe'**

*Marsh Violet* (Code: 3702)

Remarkably-fragrant, dark purple flowers cover this charming perennial violet in early spring. A good choice for underplanting shrubs or massing in drifts. The blooms are edible. (6-8" x 12") Zn4.



**Viola odorata 'Rosina'**

*Sweet Violet* (Code: 4248)

Dusky pink, sweetly-fragrant flowers bloom in early spring over heart-shaped leaves. It prefers moist conditions. (2-4" x 6") Zn5.

