



Fatsyhedera lizei 'Aureo Maculata'
Tree Ivy, Bush Ivy (Code: 6019)
 A variegated cross between Fatsia japonica and Hedera helix. This evergreen shrub/vine has large leaves splashed freely with gold. Excellent for brightening deep shade, but it can also take sun. It can be staked or pruned as desired. (6-8' x 6') Zn7.



Ipomea 'Sidekick', 'Black Heart' *New*
Sweet Potato Vine (Code: 7842)
 Striking heart shaped purple-black leaves with a matte finish will add rich texture and contrast to any container or border. A compact yet bushy variety. (12-14" x 30-46") Zn10.



Ipomoea batatas 'Desana'® Bronze' *New*
Sweet Potato Vine (Code: 7787)
 Heart-shaped bronze leaves have shorter internodes than other Ipomoea cultivars, giving a more compact growth habit. Excellent for planters and baskets. (8-12" x 24-36") Zn10.



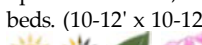
Ipomoea batatas 'Desana'® Lime' *New*
Sweet Potato Vine (Code: 7788)
 Heart-shaped chartreuse leaves have shorter internodes than other Ipomoea cultivars, giving a more compact growth habit. Excellent for planters and baskets. (8-12" x 24-36") Zn10.



Ipomoea batatas 'Sweet Georgia Red Heart'
Sweet Potato Vine (Code: 7577)
 Red-purple heart-shaped leaves spread vigorously on the ground to create a temporary groundcover. It also is commonly used to trail out of containers and baskets. (4-6' x 24-36") Zn10.



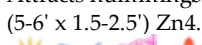
Jasminum officinale 'Fiona Sunrise'
Jasmine (Code: 4675)
 Deeply-serrated, golden yellow foliage mixes nicely with fragrant white flowers that bloom all summer. Spills and climbs, making it appealing in planters or beds. (10-12' x 10-12') Zn7.



Lonicera japonica 'Aureo-reticulata'
Goldnet Honeysuckle Vine (Code: 5642)
 Prominent bright yellow veining on the fresh green, rounded leaves make this vine appear incandescent. Fragrant light yellow flowers add appeal. (20' x 4-6') Zn5.



Lonicera periclymenum 'Peaches and Cream' *New*
Honeysuckle (Code: 7797)
 Fragrant, summer-blooming vine makes a gorgeous display of creamy yellow and soft pink flowers. Attracts hummingbirds. Evergreen in mild climates. (5-6' x 1.5-2.5') Zn4. PPAF



Parthenocissus henryana
Silvervein Creeper (Code: 6735)
 Palmately-compound leaves with silver veins turn a brilliant red in fall. Insignificant green flowers in summer are followed by dark blue berries in fall. A "Great Plant Pick" for the Pacific Northwest! (12-20' x 8-12') Zn6.



Parthenocissus quinquefolia
Virginia Creeper (Code: 6499)
 A vigorous vine to cover trellises, fences or buildings. Also a good groundcover on slopes, and to control erosion. Five-lobed leaves turn brilliant orange-to-crimson in fall. (25' x 6-10') Zn4.



Solanum crispum 'Glasnevin'
Potato Bush (Code: 6692)
 Clusters of yellow-eyed, purple "shooting star" flowers adorn this attractive shrub throughout summer. It needs winter protection in colder areas. (10' x 9') Zn7.



Solanum jasminoides 'Album'
White Potato Vine (Code: 6150)
 Graceful and vigorous twining vine with billowing clusters of yellow-eyed, white "shooting star" flowers. Profuse and long blooming, it needs a protected spot. (15' x 4') Zn8.

